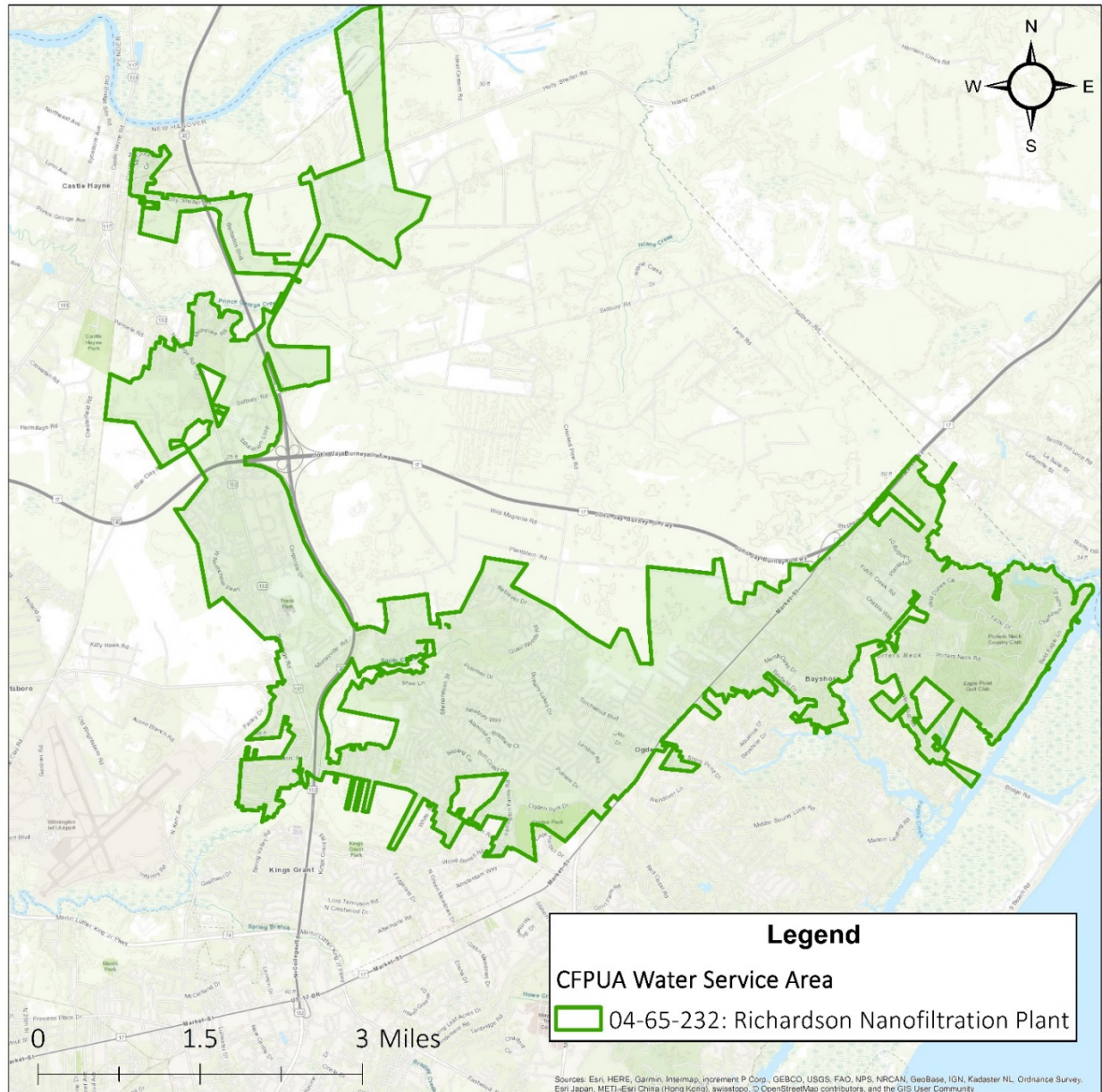


Special Compound Testing Results: Service Area 04-65-232 Richardson Nanofiltration System

Updated 05/15/2019



The *04-65-232 service area* is supplied by the *Richardson nanofiltration system*. The *Richardson system* distributes water from a *groundwater aquifer source*. This source is different from the 04-65-010 system's Sweeney water treatment plant which draws its water supply from surface water (i.e. the Cape Fear River).

Different water sources are subject to different testing regimes and not every compound is tested for in each drinking water system. If you have questions about our different testing protocols, please [contact us](#) for more information.

To find your service area's water source, you can input your address into this interactive GIS mapping tool:

[Service Area Water Source Interactive Map](#)

Table of Contents

Asbestos.....	1
Disinfection Byproducts (DBP)	2
Fluoride.....	3
GenX.....	4
Inorganic Contaminants (IOC).....	5
Volatile Organic Contaminants.....	6
Synthetic Organic Contaminants.....	7
Lead / Copper.....	8
Nitrate.....	9
Per-fluorinated Compounds.....	10
Radiologicals.....	11

Asbestos

For historical data please visit the [Drinking Water Watch](#) website

Most Recent Testing Date: 12/15/2013

Location: Richardson Distribution System

Most Recent Results:

<i>Analyte</i>	Result	Reporting Limit	Allowable Limit
<i>Asbestos</i>	Not Detected	0.2 MFL	7.0 MFL

Disinfection Byproducts (DBP)

For historical data please visit the [Drinking Water Watch](#) website

Most Recent Testing Date: 08/23/2018

Location: Richardson Distribution System

Most Recent Results:

Distribution Site BO1:

<i>Analyte</i>	Result (mg/L)	Reporting Limit (mg/L)	Regulatory Limit (mg/L)
<i>Chloroform</i>	0.0160	0.0010	0.080
<i>Bromoform</i>	Not Detected	0.0010	0.080
<i>Bromodichloromethane</i>	0.0100	0.0010	0.080
<i>Dibromochloromethane</i>	0.0047	0.0010	0.080
<i>Total Trihalomethanes</i>	0.0310		0.080
<i>Monochloroacetic acid</i>	Not Detected	0.0020	0.060
<i>Dichloroacetic acid</i>	0.0050	0.0010	0.060
<i>Trichloroacetic Acid</i>	0.0084	0.0010	0.060
<i>Monobromoacetic acid</i>	Not Detected	0.0010	0.060
<i>Dibromoacetic acid</i>	Not Detected	0.0010	0.060
<i>Total HAA5</i>	0.0130		0.060

Distribution Site BO2:

<i>Analyte</i>	Result (mg/L)	Reporting Limit (mg/L)	Regulatory Limit (mg/L)
<i>Chloroform</i>	0.0240	0.0010	0.080
<i>Bromoform</i>	Not Detected	0.0010	0.080
<i>Bromodichloromethane</i>	0.0140	0.0010	0.080
<i>Dibromochloromethane</i>	0.0064	0.0010	0.080
<i>Total Trihalomethanes</i>	0.0440		0.080
<i>Monochloroacetic acid</i>	Not Detected	0.0020	0.060
<i>Dichloroacetic acid</i>	0.0080	0.0010	0.060
<i>Trichloroacetic Acid</i>	0.0120	0.0010	0.060
<i>Monobromoacetic acid</i>	Not Detected	0.0010	0.060
<i>Dibromoacetic acid</i>	0.0013	0.0010	0.060
<i>Total HAA5</i>	0.0220		0.060

Fluoride

For historical data please visit the [Drinking Water Watch](#) website

Most Recent Testing Date: November 2018 Average

Location: Richardson Finished Water

Most Recent Results:

<i>Analyte</i>	Result	Reporting Limit	Regulatory Limit
<i>Fluoride</i>	<0.10 mg/L	N/A	4.00 mg/L

GenX

Results for the Sweeney Plant can be found on our [Emerging Contaminants](#) webpage

Most Recent Testing Date: 07/13/2017

Location: Richardson Finished Water

Most Recent Results:

<i>Analyte</i>	Result	Reporting Limit	Regulatory Limit
<i>GenX</i>	Not Detected	2.0 ug/L	N/A

Inorganic Contaminants (IOC)

For historical data please visit the [Drinking Water Watch](#) website

Most Recent Testing Date: 12/4/2018

Location: Richardson Finished Water

Most Recent Results:

<i>Analyte</i>	Result (mg/L)	Reporting Limit (mg/L)	Regulatory Limit (mg/L)
<i>Sulfate</i>	Not Detected	15	250
<i>Cyanide, Total</i>	Not Detected	0.050	0.2
<i>Sodium</i>	14	1.0	N/A
<i>Mercury</i>	Not Detected	0.4	0.002
<i>Arsenic</i>	Not Detected	0.005	0.010
<i>Antimony, Total</i>	Not Detected	0.003	N/A
<i>Barium</i>	Not Detected	0.4	2
<i>Beryllium, Total</i>	Not Detected	0.002	0.004
<i>Cadmium</i>	Not Detected	0.001	0.005
<i>Chromium</i>	Not Detected	0.02	0.1
<i>Fluoride</i>	Not Detected	N/A	4
<i>Iron</i>	Not Detected	0.06	0.3
<i>Manganese</i>	Not Detected	N/A	0.05
<i>Nickel</i>	Not Detected	0.1	N/A
<i>pH</i>	7.7 s.u.	N/A	6.50-8.50
<i>Selenium</i>	Not Detected	0.01	0.05
<i>Thallium, Total</i>	Not Detected	0.001	0.002

Volatile Organic Contaminants

For historical data please visit the [Drinking Water Watch](#) website

Most Recent Testing Date: 06/05/2018

Location: Richardson Finished Water

Most Recent Results:

<i>Analyte</i>	Result (mg/L)	Reporting Limit (mg/L)	Regulatory Limits (mg/L)
<i>1,2,4-Trichlorobenzene</i>	Not Detected	0.00050	0.07
<i>Cis-1,2-Dichloroethylene</i>	Not Detected	0.00050	0.07
<i>Xylenes (Total)</i>	Not Detected	0.00050	10.00
<i>Dichloromethane</i>	Not Detected	0.00050	0.005
<i>o-Dichlorobenzene</i>	Not Detected	0.00050	0.60
<i>p-Dichlorobenzene</i>	Not Detected	0.00050	0.075
<i>Vinyl Chloride</i>	Not Detected	0.00050	0.002
<i>1,1-Dichloroethylene</i>	Not Detected	0.00050	0.007
<i>Trans-1,2-Dichloroethylene</i>	Not Detected	0.00050	0.10
<i>1,2-Dichloroethane</i>	Not Detected	0.00050	0.005
<i>1,1,1-Trichloroethane</i>	Not Detected	0.00050	0.20
<i>Carbon tetrachloride</i>	Not Detected	0.00050	0.005
<i>1,2-Dichloropropane</i>	Not Detected	0.00050	0.005
<i>Trichloroethylene</i>	Not Detected	0.00050	0.005
<i>1,1,2-Trichloroethane</i>	Not Detected	0.00050	0.005
<i>Tetrachloroethylene</i>	Not Detected	0.00050	0.005
<i>Chlorobenzene</i>	Not Detected	0.00050	0.10
<i>Benzene</i>	Not Detected	0.00050	0.005
<i>Toluene</i>	Not Detected	0.00050	1.00
<i>Ethylbenzene</i>	Not Detected	0.00050	0.70
<i>Styrene</i>	Not Detected	0.00050	0.10

Synthetic Organic Contaminants

For historical data please visit the [Drinking Water Watch](#) website

Most Recent Testing Date: 10/13/2016

Location: Richardson Finished Water

Most Recent Results:

<i>Analyte</i>	Result (ug/L)	Reporting Limit (ug/L)	Regulatory Limit (ug/L)
<i>1,2-Dibromo-3-chloropropane (DBCP)</i>	Not Detected	0.02	0.2*
<i>1,2-Dibromomethane (EDB)</i>	Not Detected	0.01	0.05*
<i>Aroclor 1016</i>	Not Detected	0.08	N/A
<i>Aroclor 1221</i>	Not Detected	0.19	N/A
<i>Aroclor 1232</i>	Not Detected	0.23	N/A
<i>Aroclor 1242</i>	Not Detected	0.26	N/A
<i>Aroclor 1248</i>	Not Detected	0.1	N/A
<i>Aroclor 1254</i>	Not Detected	0.1	N/A
<i>Aroclor 1260</i>	Not Detected	0.2	N/A
<i>Chlordane</i>	Not Detected	0.2	2*
<i>Toxaphene</i>	Not Detected	1.0	3*
<i>Alachlor</i>	Not Detected	0.2	2*
<i>Atrazine</i>	Not Detected	0.1	3*
<i>Benzo(a)pyrene</i>	Not Detected	0.02	0.2*
<i>Gamma-BHC (Lindane)</i>	Not Detected	0.02	0.2*
<i>Di(2-ethylhexyl)adipate</i>	Not Detected	0.6	400*
<i>Di(2-ethylhexyl)phthalate</i>	Not Detected	1.32	6*
<i>Endrin</i>	Not Detected	0.01	2*
<i>Heptachlor</i>	Not Detected	0.04	0.4*
<i>Heptachlor epoxide</i>	Not Detected	0.02	0.2*
<i>Hexachlorobenzene</i>	Not Detected	0.1	1*
<i>Hexachlorocyclopentadiene</i>	Not Detected	0.1	50*
<i>Methoxychlor</i>	Not Detected	0.1	40*
<i>Simazine</i>	Not Detected	0.07	4*
<i>Carbofuran</i>	Not Detected	0.09	40*
<i>Oxamyl</i>	Not Detected	2.0	200*

Lead and Copper

For historical data please visit the [Drinking Water Watch](#) website

Most Recent Testing Date: May 2016 (90th percentile)

Location: Richardson Distribution System

Most Recent Results:

<i>Analyte</i>	Result (mg/L)	Reporting Level (mg/L)	Regulatory Limit (mg/L)
<i>Lead</i>	Not Detected	0.003	0.015
<i>Copper</i>	0.250	0.050	1.300

Nitrate

For historical data please visit the [Drinking Water Watch](#) website

Most Recent Testing Date: 11/06/2018

Location: Richardson Finished Water

Most Recent Results:

<i>Analyte</i>	Result (mg/L)	Reporting Level (mg/L)	Regulatory Limit (mg/L)
<i>Nitrate</i>	Not Detected	1.00	10.00

Per-fluorinated Compounds

Results for the Sweeney Plant can be found on our [Emerging Contaminants](#) webpage

Most Recent Testing Date: 07/13/2017

Location: Nano distribution water

Most Recent Results:

<i>Analyte</i>	Result (ug/L)	Reporting Level (ug/L)	Regulatory Limit
<i>NEtFOSA</i>	Not Detected	5.0	N/A
<i>N-EtFOSE</i>	Not Detected	2.0	N/A
<i>NMeFOSA</i>	Not Detected	2.0	N/A
<i>PFBS</i>	Not Detected	2.0	N/A
<i>PFDA</i>	Not Detected	2.0	N/A
<i>PFHpA</i>	Not Detected	2.0	N/A
<i>PFHxS</i>	Not Detected	2.0	N/A
<i>PFHxA</i>	Not Detected	2.0	N/A
<i>PFDoA</i>	Not Detected	2.0	N/A
<i>PFTA</i>	Not Detected	2.0	N/A
<i>PFNA</i>	Not Detected	2.0	N/A
<i>PFOS</i>	Not Detected	2.0	N/A
<i>PFOA</i>	Not Detected	2.0	N/A
<i>PFTrDA</i>	Not Detected	2.0	N/A
<i>PFUnA</i>	Not Detected	2.0	N/A

Radiologicals

For historical data please visit the [Drinking Water Watch](#) website

Most Recent Testing Date: 01/03/2017

Location: Richardson Finished Water

Most Recent Results:

<i>Analyte</i>	Result (pCi/L)	Reporting Limit (pCi/L)	Allowable Limit (pCi/L)
<i>Gross Alpha</i>	Not Detected	3	15
<i>Combined Uranium</i>	Not Detected	0.67	20.1
<i>Combined Radium</i>	1.1	1	5
<i>Radium-226</i>	Not Detected	1	3
<i>Radium-228</i>	1.1	1	2