

Section F: Service Saddles and Tapping Devices	Effective Date: <u>01-01-20</u> Revision #: <u>2</u>
<p>F 1 Service Saddles/ Hinged Type for 2" PVC</p> <p>F 1.1 Service Saddles/ Brass Alloy/ Stainless Steel Straps for Cast, Ductile & PVC Pipe</p> <p>F 1.2 Service Saddles/ Ductile Iron/ Stainless Steel Straps for Cast, Ductile & PVC Pipe</p> <p>F 2 Tap Sleeves 4" Thru 24", Flange Connection (Fabricated Stainless Steel)</p> <p>F 2.1 Tap Sleeves 4" Thru 12", Mechanical Joint Connection (Fabricated Stainless Steel)</p> <p>F 3 Sewer Service Saddles/ Ductile Iron/ Stainless Steel Straps/Non-Pressure</p>	

F 1 – SERVICE SADDLE, BRASS/ ALLOY/ HINGED TYPE/ 2” PVC:	Effective Date: <u>01-01-20</u> Revision #: <u>2</u>
---	---

SPECIFICATION:

Brass alloy service saddles shall meet or exceed the performance specifications of:

- ASTM Standards B62 (85-5-5-5) brass.
- ASTM Standards D2000 gaskets seals.
- Strap shall be a single hinged strap.
- Strap shall have a curvature accurately formed to meet the diameter of the pipe.
- Gasket shall be securely glued or imbedded in the body of the clamp to ensure a positive seal against the pipe.
- NSF Standards 61.

MATERIAL:

Body:

- Brass per ASTM Standards B62

Straps:

- Brass per ASTM Standards B62

Bolts & Nuts:

- Brass per ASTM Standards B62

Gasket:

- EPDM (ethylene propylene).
- Nitrile Buna-N (Acrylonitrile butadiene- (NBR)).
- Viton; Fluorel (FKM)

Coating:

- Brass: None

DESIGN:

- For 2” IPS PVC pipe.

OUTLETS:

- 1” shall be female AWWA CC taper female threads.
- 2” shall be female iron pipe threads.

RESTRICTIONS:

- Hinged saddles are not acceptable



MANUFACTURER:

- A.Y. MCDONALD MODEL- 3891
- FORD MODEL- S70
- MUELLER MODEL- S13420

F 1.1 – SERVICE SADDLES / BRASS ALLOY / STAINLESS STEEL STRAPS FOR CAST IRON, DUCTILE IRON & PVC PIPE:		Effective Date: <u>01-01-20</u> Revision #: <u>2</u>
<p><u>SPECIFICATION:</u></p> <ul style="list-style-type: none"> • Brass alloy service saddles shall meet or exceed the performance specifications of: • ASTM Standards B62 (85-5-5-5) brass. • ASTM Standards D2000 gaskets seals. • Single or multiple stainless steel straps three-inches wide or more. Single strap preferred. • Welds shall be fully passivated for corrosion resistance. • Straps shall have a curvature accurately formed to lubricant treated nuts to prevent galling. • Gasket shall be securely glued or imbedded in the body of the clamp to ensure a positive seal against the pipe. • NSF Standards 61. <p><u>MATERIAL:</u></p> <p>Body:</p> <ul style="list-style-type: none"> • Brass per ASTM Standards B62 <p>Straps:</p> <ul style="list-style-type: none"> • Stainless steel, 18-8 type 304 <p>Nuts, Bolts & Washers:</p> <ul style="list-style-type: none"> • Stainless steel, 18-8 type 316 <p>Gasket:</p> <ul style="list-style-type: none"> • EPDM (ethylene propylene) • Nitrile Buna-N (Acrylonitrile butadiene (NBR)). • Viton; Fluorel (FKM) <p>Coating:</p> <ul style="list-style-type: none"> • Brass: None <p><u>DESIGN:</u></p> <ul style="list-style-type: none"> • For cast iron, ductile iron and PVC pipe. <p><u>OUTLETS:</u></p> <ul style="list-style-type: none"> • 1" shall be female AWWA CC taper female threads. • 2" shall be female iron pipe threads. 		
<p><u>RESTRICTIONS:</u></p> <ul style="list-style-type: none"> • Shall be used for connections to 12" mains or smaller. • Hinged saddles are not acceptable 	<p><u>MANUFACTURER:</u></p> <ul style="list-style-type: none"> • A.Y. MCDONALD– 3845, 3846 & 3855, 3856 SERIES • FORD– 202BS STYLE • MUELLER– BR2S SERIES • POWER SEAL–3409 SERIES • ROMAC– 202BS SERIES • SMITH BLAIR– 325, 393 SERIES 	

F 1.2 – SERVICE SADDLES/ DUCTILE IRON/ STAINLESS STEEL STRAPS FOR CAST IRON, DUCTILE IRON & PVC PIPE:	Effective Date: <u>01-01-20</u> Revision #: <u>2</u>
--	---

SPECIFICATION:
 Ductile iron service saddles shall meet or exceed the performance specifications of:

- ASTM Standards A536 ductile iron.
- ASTM Standards D2000 gaskets seals.
- Single or multiple stainless steel straps three-inches wide or more. Single strap preferred.
- Welds shall be fully passivated for corrosion resistance.
- Straps shall have a curvature accurately formed to meet the diameter of the pipe.
- Fusion nylon or fusion epoxy coating, minimum 12 mils thick.
- Lubricant treated nuts to prevent galling.
- Gasket shall be securely glued or imbedded in the body of the clamp to ensure a positive seal against the pipe.
- NSF Standards 61.

MATERIAL:
Body:

- Ductile iron per ASTM Standards A536

Straps:

- Stainless steel, 18-8 type 304

Nuts, Bolts & Washers:

- Stainless steel, 18-8 type 316

Gasket:

- EPDM (ethylene propylene).
- Nitrile Buna-N (Acrylonitrile butadiene (NBR)).
- Viton; Fluorel (FKM)

Coating:

- Ductile iron: fusion epoxy or nylon.

DESIGN:

- For ductile iron, cast iron, and PVC pipe.

OUTLETS:

- 1” shall be female AWWA CC taper female threads.
- 2” shall be female iron pipe threads.



MANUFACTURER:

- A.Y. MCDONALD- 4845A, 4846A, 4855A, 4856A SERIES
- CASCADE– CNS2 STYLE
- DRESSER-291 SERIES per spec.
- FORD– FC202 STYLE
- JCM– 406 SERIES
- MUELLER– DR2S SERIES
- POWER SEAL–3417DI, 3417SW
- ROMAC– 202NS SERIES
- SMITH BLAIR– 397, 317 SERIES

RESTRICTIONS:

- Shall be used for connections to 12” mains or smaller.
- Hinged saddles are not acceptable

F 2 – TAP SLEEVES 4” THRU 24” FLANGE CONNECTION/ FABRICATED STAINLESS STEEL:	Effective Date: <u>01-01-20</u> Revision #: <u>2</u>
---	---

SPECIFICATION:

Service saddles shall meet or exceed the performance specifications of:

- ASTM Standards D2000 gaskets seals.
- AWWA C115 and C223
- Outlet branch O-ring seal type gasket.
- ASTM Standards A240, 18-8 type 304 stainless steel.
- Welds shall be fully passivated for corrosion resistance.
- Body shall have a curvature accurately formed to meet the diameter of the pipe.
- Lubricant treated nuts to prevent galling.
- Gasket shall be securely glued or imbedded in the body of the clamp to ensure a positive seal against the pipe.
- NSF Standards 61.

MATERIAL:

Body:

- Stainless steel, 18-8 type 304.

Flange:

- Stainless steel, 18-8 type 304.

Nuts, Bolts & Washers:

- Stainless steel, type 316.

Gasket:

- EPDM (ethylene propylene).
- Nitrile Buna-N (Acrylonitrile butadiene (NBR)).
- Viton; Fluorel (FKM)

DESIGN:

- For ductile iron, cast iron and PVC pipe.

CONNECTION:

- Flange shall conform to AWWA C228 Class SD and recessed for tapping valve (MSS-SP60).

ADDITIONAL REQUIREMENTS:

- This product is for connection of branch lines to existing in-service pipelines.



MANUFACTURER:

- FORD METER BOX STYLE FTSS
- JCM 432 SERIES
- POWER SEAL 3490AS SERIES
- ROMAC SST III SERIES

RESTRICTIONS:

F 2.1 – TAP SLEEVES 4” THRU 12”, MECHANICAL JOINT CONNECTION/ FABRICATED STAINLESS STEEL:	Effective Date: <u>01-01-20</u> Revision #: <u>2</u>
--	---

SPECIFICATION:

Service saddles shall meet or exceed the performance specifications of:

- AWWA C110 mechanical joint dimensions.
- ASTM Standards D2000 gaskets seals.
- Outlet branch O-ring seal type gasket.
- 18-8 type 304 stainless steel.
- Welds shall be fully passivated for corrosion resistance.
- Body shall have a curvature accurately formed to meet the diameter of the pipe.
- Lubricant treated nuts to prevent galling.
- Gasket shall be securely glued or imbedded in the body of the clamp to ensure a positive seal against the pipe.
- NSF Standards 61.

MATERIAL:

Body:

- Stainless steel, 18-8 type 304.

Flange:

- Stainless steel, 18-8 type 304.

Nuts, Bolts & Washers:

- Stainless steel, type 316

Gasket:

- EPDM (ethylene propylene).
- Nitrile Buna-N (Acrylonitrile butadiene (NBR)).
- Viton; Fluorel (FKM)

DESIGN:

- For ductile iron, cast iron and PVC pipe.

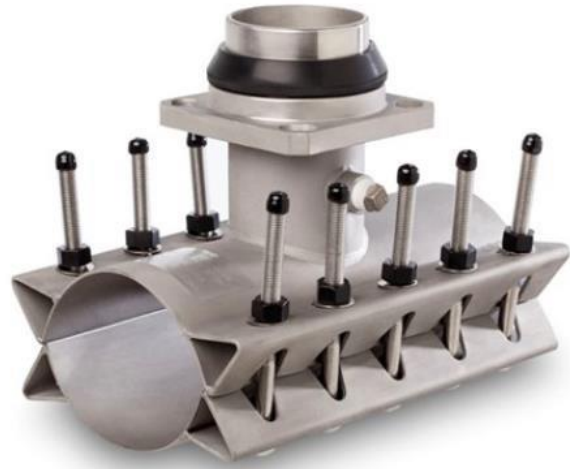
CONNECTION:

- Mechanical Joint (MJ).

RESTRICTIONS:

ADDITIONAL REQUIREMENTS:

- This product is for connection of branch lines to existing in-service pipelines.



MANUFACTURER:

- FORD METER BOX STYLE FTSS MJ
- JCM 432 SERIES MJ
- POWER SEAL 3490AS SERIES MJ
- ROMAC SST III SERIES MJ

F 3 – SEWER SERVICE SADDLES/ DUCTILE IRON/ STAINLESS STEEL STRAPS/ NON-PRESSURE:	Effective Date: <u>01-01-20</u> Revision #: <u>2</u>
---	---

SPECIFICATION:

Ductile iron service saddles shall meet or exceed the performance specifications of:

- ASTM Standards A536 ductile iron.
- ASTM Standards D2000 gaskets seals.
- Type 304 stainless steel.
- Strap shall be a single strap three-inches or more wide.
- Welds shall be fully passivated for corrosion resistance.
- Straps shall have sufficient length to fit a wide range of pipe diameters.
- Fusion nylon or fusion epoxy coating, minimum 12 mils thick or shop coat paint finish.
- Lubricant treated nuts to prevent galling.
- Gasket shall be securely glued or imbedded in the body of the clamp or inserted in the body of the clamp to ensure a positive seal against the pipe.

MATERIAL:

Body:

- Ductile iron per ASTM Standards A536 Grade 65-45-12 or Cast Iron per ASTM A126.

Straps:

- Stainless steel, ASTM A 240 type 304

Bolts, Nuts & Washers:

- Stainless steel, ASTM A193, A194, A240 type 304

Gasket:

- SBR (Styrene Butadiene).
- Polyisoprene
- EPDM (ethylene propylene).
- Nitrile Buna-N (Acrylonitrile butadiene (NBR)).
- Viton; Fluorel (FKM).

Coating:

- Ductile iron= fusion epoxy, nylon or shop coat paint finish.

RESTRICTIONS:

- Hinged saddles are not acceptable.

DESIGN:

- For ductile iron, cast iron, and poly vinyl chloride (PVC) pipe.

OUTLETS:

- 4" and 6"



MANUFACTURER:

- ROMAC– STYLE “CB” SEWER SADDLE
- GENECO SEALTITE SEWER PIPE SADDLE
- FORD METER BOX FSS SEWER SADDLE