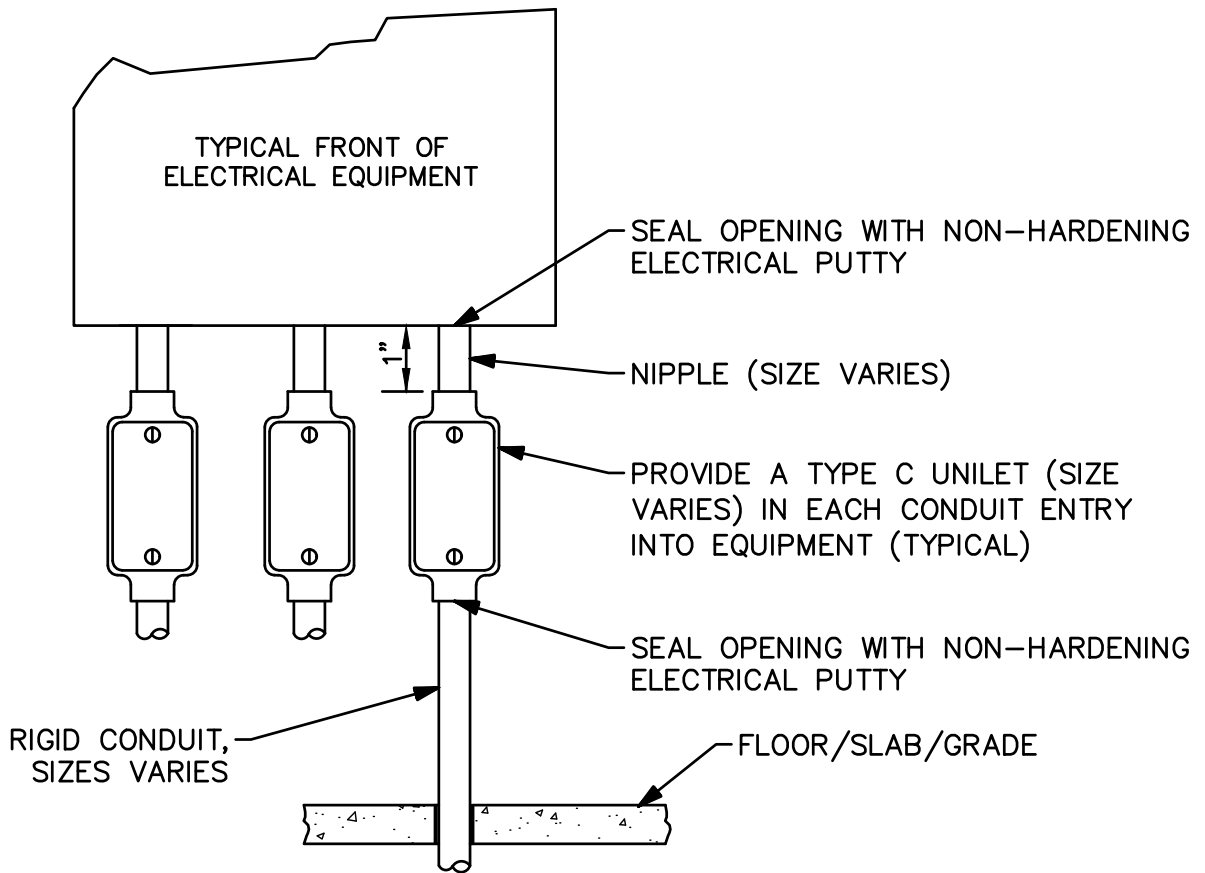


User:JUSTIN.HANES File:CFPUA-SHARES\DEPARTMENTS\ENGINEERS\2003_PROJECT MANAGEMENT DIVISION\2017 PROJECT S314817.046-STANDARDS UPDATE\40_CFPUA_DWG DETAILS\FINAL DETAIL-DRAWINGS\CAD\ELECTRICAL\1764_ELEC DETAILS.DWG Scale:1:1 Plot Date:1/17/2018 Time:08:22 Justin Hanes; Layout:PS-E16 NONHAZ SEAL

NOTE:

SEALING FITTINGS AS DEPICTED HERE ARE TO BE PROVIDED FOR CONDUIT ENTRIES TO EQUIPMENT WHERE THE CONDUIT ORIGINATES OUTSIDE OF THE FRP EQUIPMENT ENCLOSURE OR PRECAST CONCRETE BUILDING AT A NON-HAZARDOUS LOCATION.



DETAIL:	
NON-HAZARDOUS LOCATION CONDUIT SEAL FITTINGS	
SCALE: NOT TO SCALE	CFPUA DETAIL DATE:
CFPUA REV. No: 1	01/01/19



CAPE FEAR PUBLIC UTILITY AUTHORITY
 235 GOVERNMENT CENTER DRIVE
 WILMINGTON, NC 28403
 OFFICE: (910)332-6560

Stewardship. Sustainability. Service.

DETAIL NO: PS-E16
SHEET NO: -