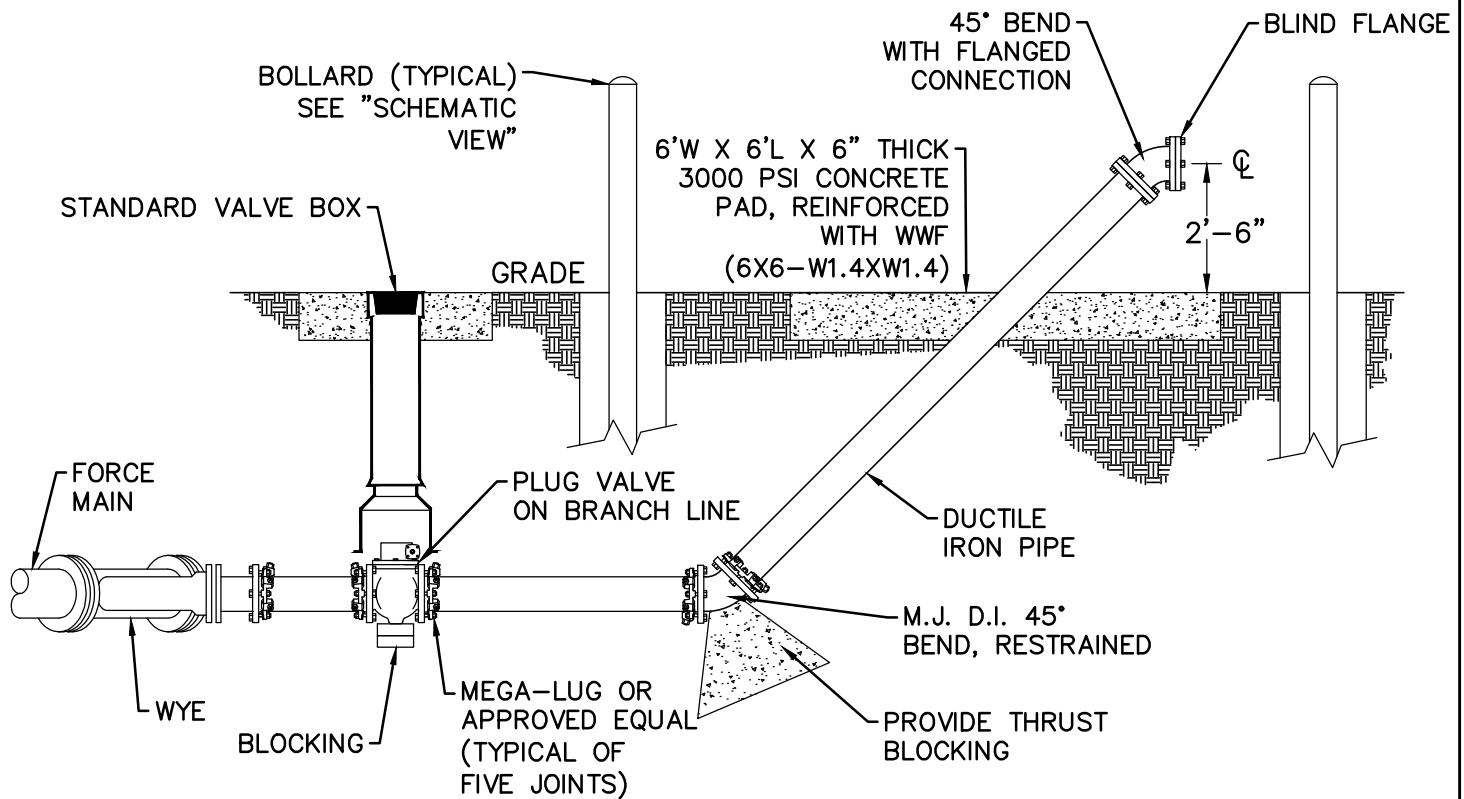


SCHEMATIC VIEW



SECTION VIEW

NOTES:

- 1) THE BYPASS CONNECTION SHALL BE LOCATED WITHIN 50-ft OF THE PUMP STATION VALVE VAULT. THE CONNECTION SHALL BE SURROUNDED BY BOLLARDS AND LABELED "FOR EMERGENCY BYPASS PUMPING ONLY".
- 2) ALL PIPING WITHIN THE BYPASS ASSEMBLY SHALL BE INTERIOR COATED.
- 3) ALL BURIED PIPES, VALVES, AND FITTINGS SHALL BE RESTRAINED WITH WEDGE ACTION RETAINER GLANDS AND BLOCKING AS SHOWN.
- 4) ALL PIPING FOR THE BYPASS CONNECTION SHALL BE SAME SIZE AS THE FORCE MAIN.

PUMP STATION BYPASS CONNECTION DETAIL

DETAIL:	
BYPASS CONNECTION SCHEMATIC and SECTION	
SCALE: NOT TO SCALE	CFPUA DETAIL DATE:
CFPUA REV. No: 1	01/01/19

CAPE FEAR PUBLIC UTILITY AUTHORITY
 235 GOVERNMENT CENTER DRIVE
 WILMINGTON, NC 28403
 OFFICE: (910)332-6560

Stewardship. Sustainability. Service.

DETAIL NO:
PS-C5
SHEET NO:
-