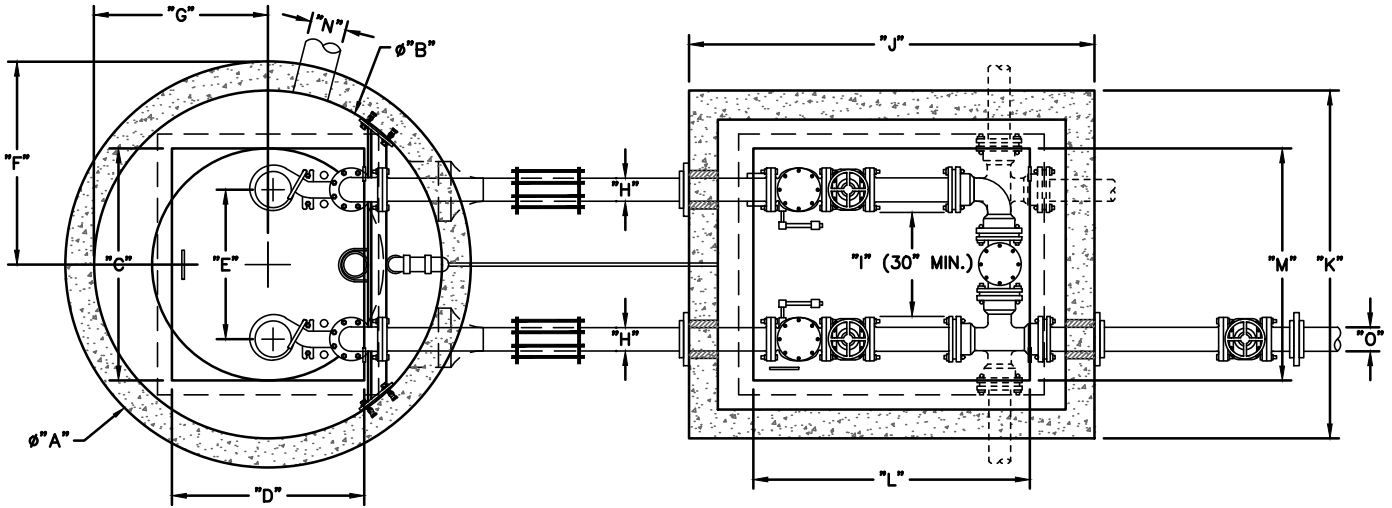
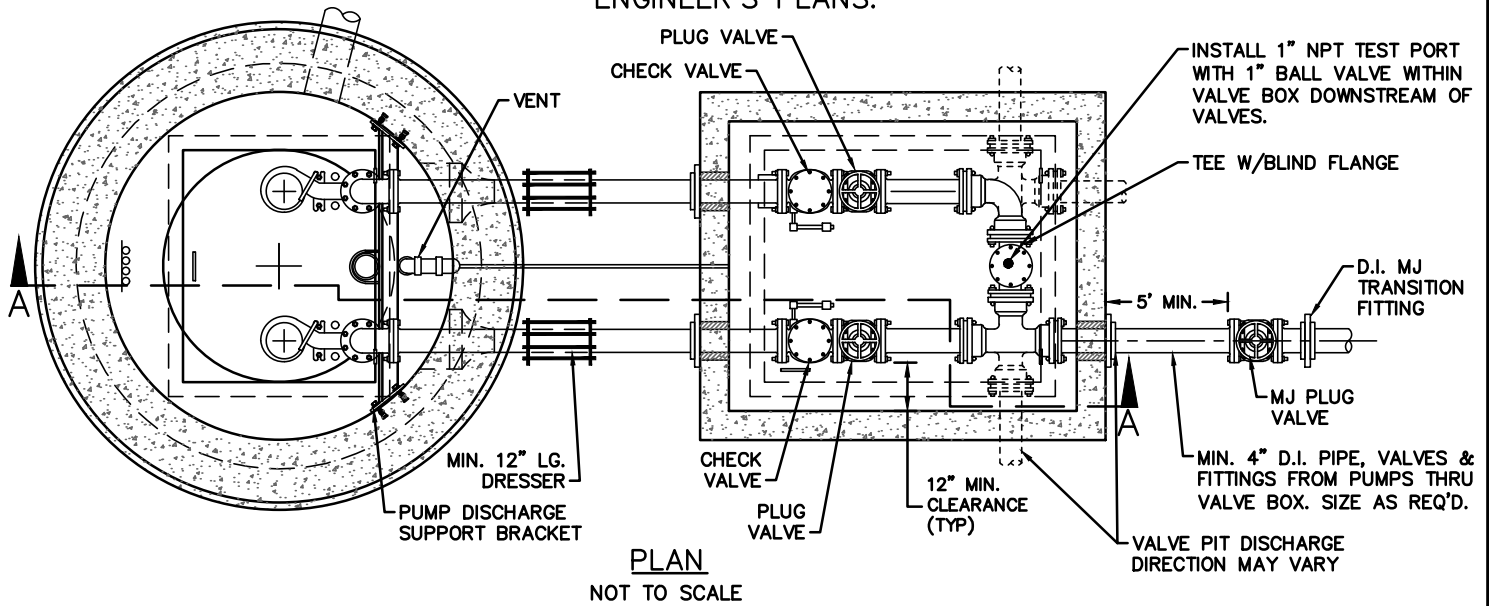


WET WELL AND VALVE PLAN IS TYPICAL AND NOT TO SCALE.
 INCLUDE PROJECT SPECIFIC, TO SCALE DRAWING IN
 ENGINEER'S PLANS.



ITEM	DESCRIPTION
"A"	OUTSIDE DIAMETER OF WET WELL
"B"	INSIDE DIAMETER OF WET WELL
"C"	WET WELL ACCESS HATCH LENGTH
"D"	WET WELL ACCESS HATCH WIDTH
"E"	CL PUMP TO CL PUMP DIMENSION
"F"	CL HATCH TO OUTSIDE OF WET WELL
"G"	CL HATCH TO INSIDE OF WET WELL
"H"	PIPE DIAMETER
"I"	FLANGE TO FLANGE DIMENSION
"J"	VALVE VAULT LENGTH
"K"	VALVE VAULT WIDTH
"L"	VALVE VAULT ACCESS HATCH LENGTH
"M"	VALVE VAULT ACCESS HATCH WIDTH
"N"	INFLUENT PIPE SIZE
"O"	FORCE MAIN PIPE SIZE

NOTES:

1. PROVIDE PRECAST CONCRETE WET WELL MEETING NCDEQ MINIMUM DESIGN CRITERIA AND PUMP MANUFACTURER REQUIREMENTS.
2. VALVE VAULT TO SUIT FORCE MAIN DIAMETER AND PUMP MANUFACTURER REQUIREMENTS. SIZE TO ACHIEVE ADEQUATE CLEARANCES FOR INSTALLATION AND O&M.
3. PROVIDE SINGLE OR DOUBLE LEAF ALUMINUM DOORS TO MAXIMIZE STRUCTURE ACCESS OPENING.
4. WET WELL AND VALVE PLAN IS TYPICAL AND IS NOT TO SCALE AND SHALL NOT BE INCLUDED ON ENGINEER'S DRAWINGS. ENGINEER'S DRAWING SHALL SHOW WET WELL, VALVE VAULT, VALVES AND PIPING TO SCALE.
5. DIMENSIONS TO BE INCLUDED ON PUMP STATION DRAWINGS.

DETAIL:

**WET WELL - VALVE VAULT
 PLAN**

SCALE: NOT TO SCALE

CFPUA DETAIL DATE:

CFPUA REV. No: 1

01/01/19



CAPE FEAR PUBLIC UTILITY AUTHORITY
 235 GOVERNMENT CENTER DRIVE
 WILMINGTON, NC 28403
 OFFICE: (910)332-6560

Stewardship. Sustainability. Service.

DETAIL NO:

PS-C2

SHEET NO:

-