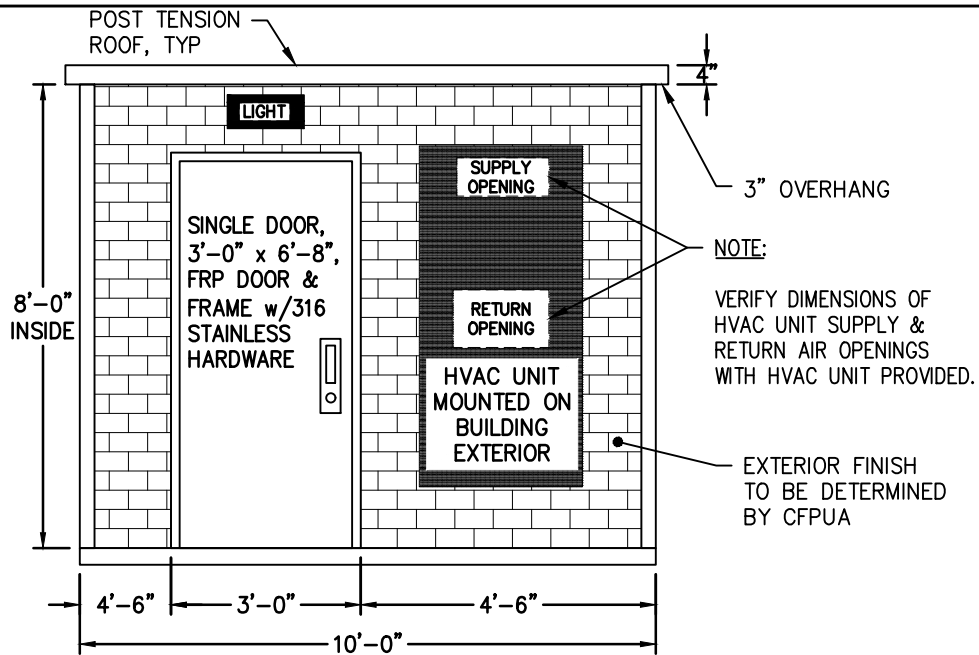


User:JUSTIN.HANES File:\CFPUA-SHARES\DEPARTMENTS\ENGINEERS\2009\_PROJECT MANAGEMENT DIVISION\2017 PROJECTS\314817\045-STANDARDS UPDATE\40\_CFPUA\_DWG\_DETAILS\9\_FINAL\_DETAIL\_DRAWINGS\CAD\PS-B1-B-2\_PRECAST\_BUILDING.DWG Scale:1:1 Plot Date:11/8/2018 Time:10:08 Justin Hanes Layout:PS-B2



**FRONT ELEVATION**

REMOVE TURF AND OR UNACCEPTABLE SOIL AND PLACE A 12" MIN. STONE LAYER, (SEE NOTE #2) AND LEVEL TO WITHIN 1/2" DIFFERENTIAL OVER THE ENTIRE BUILDING AREA.

2"x12" TREATED PINE BOARDS AROUND FULL PERIMETER OF GRAVEL BASE FOR FORMWORK TO CONTAIN GRAVEL

24" MIN, 3 SIDES

6 MIL POLYETHYLENE VAPOR BARRIER

CONCRETE SLAB TO BE DESIGNED BY ENGINEER

POSITIVE DRAINAGE REQUIRED

UNDISTURBED SOIL OR COMPACTED FILL (SEE NOTE #2)

NO MAJOR ROCK STRUCTURE WITHIN 2 FEET OF 12" STONE LAYER

12" MIN, 4 SIDES

**REAR ELEVATION**

**NOTES:**

1. MINIMUM SOIL BEARING CAPACITY SHALL BE 1500 LB / SQ FT.
2. MATERIAL FOR STONE OR GRAVEL LAYER SHALL BE 3/8" OR SMALLER.
3. WHERE ROCK OR UNACCEPTABLE SOILS OCCUR, UNDERCUT A MINIMUM OF 2 FEET AND FILL WITH STONE WHICH CONFORMS TO ASTM C33, (#57, #67, #6, #7 OR #8) AND COMPACT TO OBTAIN MINIMUM SOIL BEARING REQUIREMENT.
4. FAILURE TO PREPARE PAD AS SHOWN HERE-IN MAY RESULT IN LOSS OF WATER TIGHTNESS, STRUCTURAL FAILURE AND VOID ANY WARRANTIES.
5. 12" STONE BASE VERSES 4" CONCRETE SLAB TO BE DETERMINED BY CFPUA.

DETAIL:

**PRECAST BUILDING ELEVATION AND BASE DETAIL**

SCALE: NOT TO SCALE

CFPUA DETAIL DATE:

CFPUA REV. No: 1

01/01/19



**CAPE FEAR PUBLIC UTILITY AUTHORITY**  
 235 GOVERNMENT CENTER DRIVE  
 WILMINGTON, NC 28403  
 OFFICE: (910)332-6560

Stewardship. Sustainability. Service.

DETAIL NO:

**PS-B2**

SHEET NO:

-