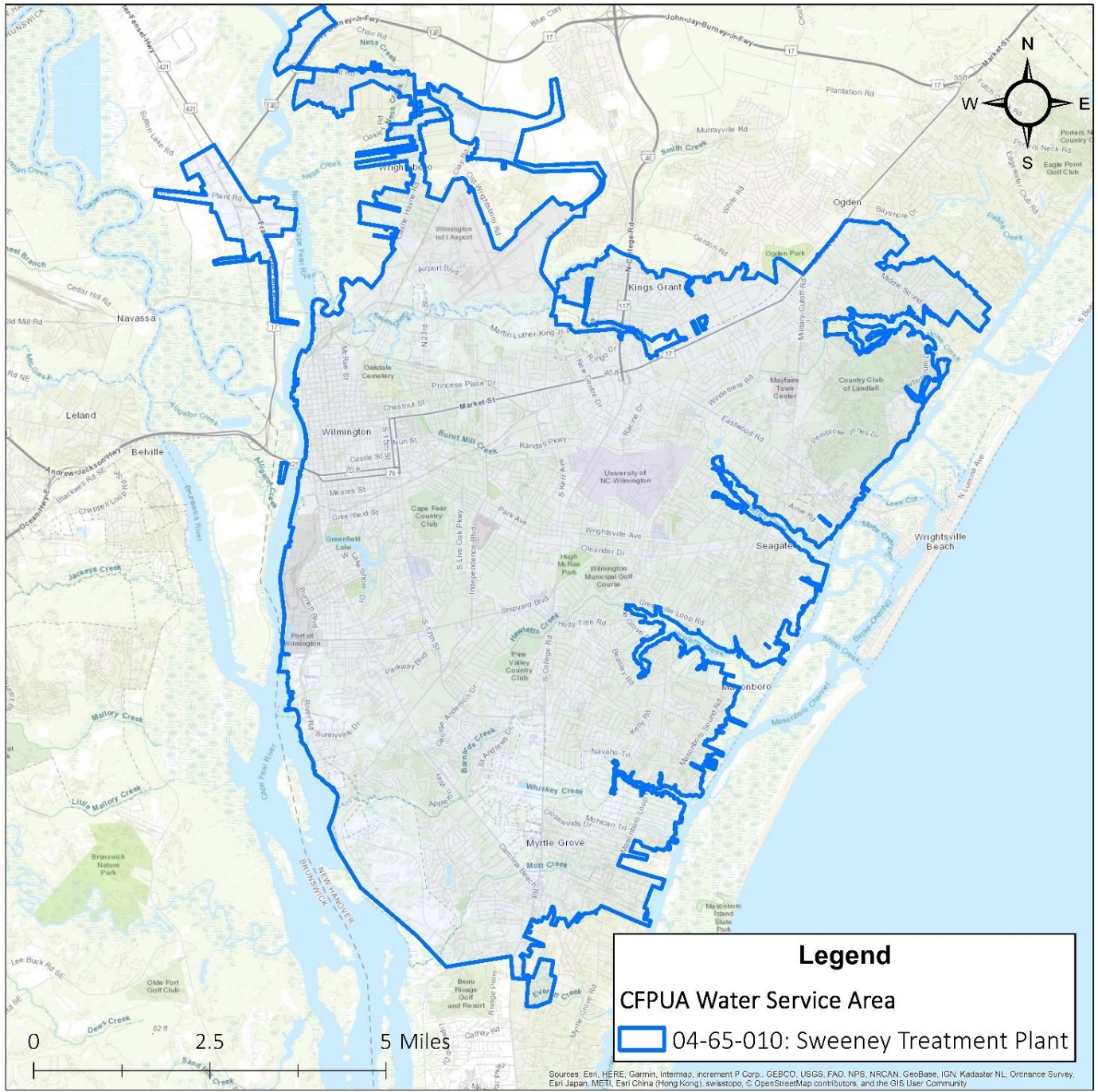


Special Compound Testing Results for: Service Area 04-65-010

Sweeney Water Treatment Plant

Updated 10/05/2018



The **04-65-010 system** is supplied by the **Sweeney Water Treatment Plant**. The Sweeney plant has a **surface water** intake that draws its water supply from the **Cape Fear River**.

To find your service area water source, you can input your address into this interactive GIS mapping tool: [Service Area Water Source Interactive Map](#)

Table of Contents

Aldehyde.....	1
Asbestos.....	2
Bromide / Bromate.....	3
Chlorate / Chlorite.....	4
Disinfection Byproducts (DBP)	5
Endocrine Disrupting Compounds / Pharmaceuticals and Personal Care Products.....	9
Fluoride.....	12
GenX.....	13
Giardia / Cryptosporidium.....	14
Inorganic Contaminants (IOC)	15
Volatile Organic Contaminants.....	16
Synthetic Organic Contaminants.....	17
Lead / Copper.....	18
Nitrate.....	19
Per-fluorinated Compounds.....	20
Radiologicals.....	22
Sweeney Pilot Test.....	23
Total Organic Carbon / Alkalinity.....	24

Aldehyde

Most Recent Testing Date: 03/07/2017

Location: Sweeney Finished Water

Most Recent Results:

<i>Analyte</i>	<i>Result</i>	<i>Reporting Limit</i>	<i>Regulatory Limit</i>
<i>Aldehyde</i>	Not Detected	5.2 ug/L	N/A

Asbestos

For historical data please visit the [Drinking Water Watch](#) website

Most Recent Testing Date: 07/15/2013

Location: Sweeney Distribution System

Most Recent Results:

<i>Analyte</i>	Result	Reporting Limit	Allowable Limit
<i>Asbestos</i>	Not Detected	0.2 MFL	7.0 MFL

Bromide/Bromate

For historical data please visit the [Drinking Water Watch](#) website

Most Recent Testing Date: 09/04/2018

Location: Sweeney Finished Water

Most Recent Results:

<i>Analyte</i>	Result (mg/L)	Reporting Limit (mg/L)	Regulatory Limit (mg/L)
<i>Bromate</i>	0.0014	0.010	0.010
<i>Bromide</i>	0.11	0.010	N/A

Chlorate / Chlorite

Most Recent Testing Date: 07/10/2017

Location: Sweeney Finished Water

Most Recent Results:

<i>Analyte</i>	Result (ug/L)	Reporting Limit (ug/L)	Regulatory Limit (ug/L)
<i>Chlorite</i>	Not Detected	5.0 ug/L	N/A
<i>Chlorate</i>	84.9 ug/L	50.0 ug/L	N/A

Disinfection Byproducts (DBP)

For historical data please visit the [Drinking Water Watch](#) website

Most Recent Testing Date: 07/03/2018

Location: Sweeney Distribution System

Most Recent Results:

Distribution Site BO1:

<i>Analyte</i>	Result (mg/L)	Reporting Limit (mg/L)	Regulatory Limit (mg/L)
<i>Chloroform</i>	0.0270	0.0010	0.080
<i>Bromoform</i>	0.0022	0.0010	0.080
<i>Bromodichloromethane</i>	0.0190	0.0010	0.080
<i>Dibromochloromethane</i>	0.0120	0.0010	0.080
<i>Total Trihalomethanes</i>	0.0610	0.0010	0.080
<i>Monochloroacetic acid</i>	0.0020	0.0010	0.060
<i>Dichloroacetic acid</i>	0.0150	0.0010	0.060
<i>Monobromoacetic acid</i>	0.0110	0.0020	0.060
<i>Dibromoacetic acid</i>	Not Detected	0.0010	0.060
<i>Trichloroacetic Acid</i>	0.0050	0.0010	0.060
<i>Total HAA5</i>	0.0330	0.0020	0.060

Distribution Site BO2:

<i>Analyte</i>	Result (mg/L)	Reporting Limit (mg/L)	Regulatory Limit (mg/L)
<i>Chloroform</i>	0.0230	0.0010	0.080
<i>Bromoform</i>	0.0016	0.0010	0.080
<i>Bromodichloromethane</i>	0.0150	0.0010	0.080
<i>Dibromochloromethane</i>	0.0096	0.0010	0.080
<i>Total Trihalomethanes</i>	0.0490	0.0010	0.080
<i>Monochloroacetic acid</i>	0.0022	0.0010	0.060
<i>Dichloroacetic acid</i>	0.0160	0.0010	0.060
<i>Monobromoacetic acid</i>	0.0120	0.0020	0.060
<i>Dibromoacetic acid</i>	Not Detected	0.0010	0.060
<i>Trichloroacetic Acid</i>	0.0046	0.0010	0.060
<i>Total HAA5</i>	0.0340	0.0020	0.060

Distribution Site BO3:

<i>Analyte</i>	Result (mg/L)	Reporting Limit (mg/L)	Regulatory Limit (mg/L)
<i>Chloroform</i>	0.0310	0.0010	0.080
<i>Bromoform</i>	0.0021	0.0010	0.080
<i>Bromodichloromethane</i>	0.0180	0.0010	0.080
<i>Dibromochloromethane</i>	0.0120	0.0010	0.080
<i>Total Trihalomethanes</i>	0.0630	0.0010	0.080
<i>Monochloroacetic acid</i>	0.0024	0.0010	0.060
<i>Dichloroacetic acid</i>	0.0140	0.0010	0.060
<i>Monobromoacetic acid</i>	0.0110	0.0020	0.060
<i>Dibromoacetic acid</i>	Not Detected	0.0010	0.060
<i>Trichloroacetic Acid</i>	0.0049	0.0010	0.060
<i>Total HAA5</i>	0.0320	0.0020	0.060

Distribution Site BO4:

<i>Analyte</i>	Result (mg/L)	Reporting Limit (mg/L)	Regulatory Limit (mg/L)
<i>Chloroform</i>	0.0290	0.0010	0.080
<i>Bromoform</i>	0.0020	0.0010	0.080
<i>Bromodichloromethane</i>	0.0190	0.0010	0.080
<i>Dibromochloromethane</i>	0.0120	0.0010	0.080
<i>Total Trihalomethanes</i>	0.0620	0.0010	0.080
<i>Monochloroacetic acid</i>	0.0022	0.0010	0.060
<i>Dichloroacetic acid</i>	0.0150	0.0010	0.060
<i>Monobromoacetic acid</i>	0.0110	0.0020	0.060
<i>Dibromoacetic acid</i>	Not Detected	0.0010	0.060
<i>Trichloroacetic Acid</i>	0.0045	0.0010	0.060
<i>Total HAA5</i>	0.0330	0.0020	0.060

Distribution Site BO5:

<i>Analyte</i>	Result (mg/L)	Reporting Limit (mg/L)	Regulatory Limit (mg/L)
<i>Chloroform</i>	0.0270	0.0010	0.080
<i>Bromoform</i>	0.0020	0.0010	0.080
<i>Bromodichloromethane</i>	0.0190	0.0010	0.080
<i>Dibromochloromethane</i>	0.0130	0.0010	0.080
<i>Total Trihalomethanes</i>	0.0610	0.0010	0.080
<i>Monochloroacetic acid</i>	Not Detected	0.0010	0.060
<i>Dichloroacetic acid</i>	0.0140	0.0010	0.060
<i>Monobromoacetic acid</i>	0.0076	0.0020	0.060
<i>Dibromoacetic acid</i>	Not Detected	0.0010	0.060
<i>Trichloroacetic Acid</i>	0.0046	0.0010	0.060
<i>Total HAA5</i>	0.0260	0.0020	0.060

Distribution Site BO6:

<i>Analyte</i>	Result (mg/L)	Reporting Limit (mg/L)	Regulatory Limit (mg/L)
<i>Chloroform</i>	0.0320	0.0010	0.080
<i>Bromoform</i>	0.0021	0.0010	0.080
<i>Bromodichloromethane</i>	0.0200	0.0010	0.080
<i>Dibromochloromethane</i>	0.0130	0.0010	0.080
<i>Total Trihalomethanes</i>	0.0680	0.0010	0.080
<i>Monochloroacetic acid</i>	0.0024	0.0010	0.060
<i>Dichloroacetic acid</i>	0.0150	0.0010	0.060
<i>Monobromoacetic acid</i>	0.0120	0.0020	0.060
<i>Dibromoacetic acid</i>	Not Detected	0.0010	0.060
<i>Trichloroacetic Acid</i>	0.0049	0.0010	0.060
<i>Total HAA5</i>	0.0340	0.0020	0.060

Distribution Site BO7:

<i>Analyte</i>	Result (mg/L)	Reporting Limit (mg/L)	Regulatory Limit (mg/L)
<i>Chloroform</i>	0.0410	0.0010	0.080
<i>Bromoform</i>	0.0016	0.0010	0.080
<i>Bromodichloromethane</i>	0.0210	0.0010	0.080
<i>Dibromochloromethane</i>	0.0120	0.0010	0.080
<i>Total Trihalomethanes</i>	0.0750	0.0010	0.080
<i>Monochloroacetic acid</i>	0.0024	0.0010	0.060
<i>Dichloroacetic acid</i>	0.0180	0.0010	0.060
<i>Monobromoacetic acid</i>	0.0140	0.0020	0.060
<i>Dibromoacetic acid</i>	Not Detected	0.0010	0.060
<i>Trichloroacetic Acid</i>	0.0044	0.0010	0.060
<i>Total HAA5</i>	0.0380	0.0020	0.060

Distribution Site BO8:

<i>Analyte</i>	Result (mg/L)	Reporting Limit (mg/L)	Regulatory Limit (mg/L)
<i>Chloroform</i>	0.0290	0.0010	0.080
<i>Bromoform</i>	0.0019	0.0010	0.080
<i>Bromodichloromethane</i>	0.0190	0.0010	0.080
<i>Dibromochloromethane</i>	0.0120	0.0010	0.080
<i>Total Trihalomethanes</i>	0.0620	0.0010	0.080
<i>Monochloroacetic acid</i>	0.0023	0.0010	0.060
<i>Dichloroacetic acid</i>	0.0140	0.0010	0.060
<i>Monobromoacetic acid</i>	0.0110	0.0020	0.060
<i>Dibromoacetic acid</i>	Not Detected	0.0010	0.060
<i>Trichloroacetic Acid</i>	0.0048	0.0010	0.060
<i>Total HAA5</i>	0.0320	0.0020	0.060

Endocrine Disrupting Compounds / Pharmaceuticals and Personal Care Products

Most Recent Testing Date: 01/30/2018

Location: Sweeney Finished Water

Most Recent Results:

<i>Analyte</i>	Result	Reporting Limit	Regulatory Limit
<i>Bisphenol A</i>	Not Detected	0.1 ug/L	N/A
<i>Nonylphneol</i>	Not Detected	0.5 ug/L	N/A
<i>4-n-Octylphenol</i>	Not Detected	0.5 ug/L	N/A
<i>4-tert-Octylphenol</i>	Not Detected	0.5 ug/L	N/A
<i>Pentachlorophenol</i>	Not Detected	0.1 ug/L	N/A
<i>Tetrabromobisphenol A</i>	Not Detected	0.1 ug/L	N/A
<i>2, 4, 6-trichlorophenol</i>	Not Detected	0.1 ug/L	N/A
<i>Diethylstilbestrol</i>	Not Detected	0.5 ug/L	N/A
<i>17alpha-Estradiol</i>	Not Detected	0.5 ng/L	N/A
<i>17beta-Estradiol</i>	Not Detected	0.5 ng/L	N/A
<i>Estriol</i>	Not Detected	0.5 ng/L	N/A
<i>Estrone</i>	Not Detected	0.5 ng/L	N/A
<i>17alpha-Ethynyl estradiol</i>	Not Detected	0.5 ng/L	N/A
<i>Progesterone</i>	Not Detected	0.1 ng/L	N/A
<i>Cis-Testosterone</i>	Not Detected	0.1 ng/L	N/A
<i>Trans-testosterone</i>	Not Detected	0.1 ng/L	N/A
<i>Acetaminophen</i>	Not Detected	0.005 ug/L	N/A
<i>Antipyrine</i>	Not Detected	0.001 ug/L	N/A
<i>Atenolol</i>	Not Detected	0.001 ug/L	N/A
<i>Azithromycin</i>	Not Detected	0.005 ug/L	N/A
<i>Caffeine</i>	Not Detected	0.05 ug/L	N/A
<i>Carbadox</i>	Not Detected	0.005 ug/L	N/A
<i>Carbamazepine</i>	Not Detected	0.001 ug/L	N/A
<i>Cotinine</i>	0.003 ug/L	0.001 ug/L	N/A
<i>DEET</i>	Not Detected	0.005 ug/L	N/A
<i>Dexamethasone</i>	Not Detected	0.005 ug/L	N/A
<i>Diazepam</i>	Not Detected	0.001 ug/L	N/A
<i>Diltiazem</i>	Not Detected	0.0001 ug/L	N/A
<i>Erythromycin</i>	Not Detected	0.001 ug/L	N/A
<i>Fluoxetine (Prozac)</i>	Not Detected	0.001 ug/L	N/A

<i>Iopromide</i>	Not Detected	0.05 ug/L	N/A
<i>Lincomycin</i>	Not Detected	0.0001 ug/L	N/A
<i>Meprobamate</i>	0.003 ug/L	0.001 ug/L	N/A
<i>Monensin</i>	Not Detected	0.001 ug/L	N/A
<i>Narasin</i>	Not Detected	0.001 ug/L	N/A
<i>Nicotine</i>	Not Detected	0.01 ug/L	N/A
<i>Oleandomycin</i>	Not Detected	0.001 ug/L	N/A
<i>Paraxanthine</i>	Not Detected	0.005 ug/L	N/A
<i>Primidone</i>	Not Detected	0.005 ug/L	N/A
<i>Roxithromycin</i>	Not Detected	0.001 ug/L	N/A
<i>Salinomycin</i>	Not Detected	0.0001 ug/L	N/A
<i>Sulfadiazine</i>	Not Detected	0.001 ug/L	N/A
<i>Sulfadimethoxine</i>	Not Detected	0.0001 ug/L	N/A
<i>Sulfamethazine</i>	Not Detected	0.001 ug/L	N/A
<i>Sulfamethizole</i>	Not Detected	0.001 ug/L	N/A
<i>Sulfamethoxazole</i>	Not Detected	0.001 ug/L	N/A
<i>Sulfasalazine</i>	Not Detected	0.005 ug/L	N/A
<i>Sulfathiazole</i>	Not Detected	0.001 ug/L	N/A
<i>Theobromine</i>	Not Detected	0.05 ug/L	N/A
<i>Trimethoprim</i>	Not Detected	0.001 ug/L	N/A
<i>Tris(2-chloroethyl) phosphate</i>	Not Detected	0.01 ug/L	N/A
<i>Tris(chloropropyl) phosphate</i>	0.07 ug/L	0.01 ug/L	N/A
<i>Tylosin</i>	Not Detected	0.001 ug/L	N/A
<i>Virginamycin M1</i>	Not Detected	0.001 ug/L	N/A
<i>Acesulfame-K</i>	0.03 ug/L	0.01 ug/L	N/A
<i>Bezafibrate</i>	Not Detected	0.0005 ug/L	N/A
<i>Chloramphenicol</i>	Not Detected	0.005 ug/L	N/A
<i>Chlorotetracycline</i>	Not Detected	0.05 ug/L	N/A
<i>Cloribric acid</i>	Not Detected	0.0005 ug/L	N/A
<i>Diclofenac</i>	Not Detected	0.0005 ug/L	N/A
<i>Dilantin</i>	Not Detected	0.002 ug/L	N/A
<i>Gemfibrozil</i>	Not Detected	0.0005 ug/L	N/A
<i>Ibuprofen</i>	Not Detected	0.05 ug/L	N/A
<i>Levothyroxine (Synthroid)</i>	Not Detected	0.002 ug/L	N/A
<i>Naproxen</i>	Not Detected	0.002 ug/L	N/A
<i>Penicillin G</i>	Not Detected	0.002 ug/L	N/A
<i>Penicillin V</i>	Not Detected	0.002 ug/L	N/A
<i>Prednisone</i>	Not Detected	0.002 ug/L	N/A
<i>Salicylic acid</i>	Not Detected	0.05 ug/L	N/A
<i>Sucralose</i>	2.4 ug/L	0.025 ug/L	N/A

<i>Theophylline</i>	Not Detected	0.005 ug/L	N/A
<i>Triclocarban</i>	Not Detected	0.0005 ug/L	N/A
<i>Triclosan</i>	Not Detected	0.050 ug/L	N/A

Fluoride

For historical data please visit the [Drinking Water Watch](#) website

Most Recent Testing Date: May 2018 Average

Location: Sweeney Finished Water

Most Recent Results:

<i>Analyte</i>	Result	Reporting Limit	Regulatory Limit
<i>Fluoride</i>	<0.10 mg/L	N/A	4.00 mg/L

GenX

2018 results can be found at our [Emerging Contaminants](#) webpage

Most Recent Testing Date: 09/04/2018

Location: Sweeney Finished Water

Most Recent Results:

<i>Analyte</i>	<i>Result</i>	<i>Reporting Limit</i>	<i>Regulatory Limit</i>
<i>GenX</i>	12.0 ug/L	0.611 ug/L	N/A

Giardia/Cryptosporidium

Most Recent Testing Date: 11/07/2017

Location: Sweeney Finished Water

Most Recent Results:

<i>Analyte</i>	Result	Reporting Limit	Regulatory Limit
<i>Giardia</i>	Not Detected	0.980 cysts/100L	N/A
<i>Cryptosporidium</i>	Not Detected	0.980 cocystss/100L	N/A

Inorganic Contaminants (IOC)

For historical data please visit the [Drinking Water Watch](#) website

Most Recent Testing Date: 11/07/2017

Location: Sweeney Finished Water

Most Recent Results:

<i>Analyte</i>	<i>Result (mg/L)</i>	<i>Reporting Limit (mg/L)</i>	<i>Regulatory Limit (mg/L)</i>
<i>Sulfate</i>	35	15	250
<i>Cyanide, Total</i>	Not Detected	0.050	0.2
<i>Sodium</i>	28	1.0	N/A
<i>Mercury</i>	Not Detected	0.4	0.002
<i>Arsenic</i>	Not Detected	0.005	0.010
<i>Antimony, Total</i>	Not Detected	0.003	N/A
<i>Barium</i>	Not Detected	0.4	2
<i>Beryllium, Total</i>	Not Detected	0.002	0.004
<i>Cadmium</i>	Not Detected	0.001	0.005
<i>Chromium</i>	Not Detected	0.02	0.1
<i>Fluoride</i>	0.7	N/A	4
<i>Iron</i>	Not Detected	0.06	0.3
<i>Manganese</i>	0.015	N/A	0.05
<i>Nickel</i>	Not Detected	0.1	N/A
<i>pH</i>	7.1 s.u.	N/A	6.50-8.50
<i>Selenium</i>	Not Detected	0.01	0.05
<i>Thallium, Total</i>	Not Detected	0.001	0.002

Volatile Organic Contaminants

For historical data please visit the [Drinking Water Watch](#) website

Most Recent Testing Date: 07/10/2018

Location: Sweeney Finished Water

Most Recent Results:

<i>Analyte</i>	Result (mg/L)	Reporting Limit (mg/L)	Regulatory Limits (mg/L)
<i>1,2,4-Trichlorobenzene</i>	Not Detected	0.00050	0.07
<i>Cis-1,2-Dichloroethylene</i>	Not Detected	0.00050	0.07
<i>Xylenes (Total)</i>	Not Detected	0.00050	10.00
<i>Dichloromethane</i>	Not Detected	0.00050	0.005
<i>o-Dichlorobenzene</i>	Not Detected	0.00050	0.60
<i>p-Dichlorobenzene</i>	Not Detected	0.00050	0.075
<i>Vinyl Chloride</i>	Not Detected	0.00050	0.002
<i>1,1-Dichloroethylene</i>	Not Detected	0.00050	0.007
<i>Trans-1,2-Dichloroethylene</i>	Not Detected	0.00050	0.10
<i>1,2-Dichloroethane</i>	Not Detected	0.00050	0.005
<i>1,1,1-Trichloroethane</i>	Not Detected	0.00050	0.20
<i>Carbon tetrachloride</i>	Not Detected	0.00050	0.005
<i>1,2-Dichloropropane</i>	Not Detected	0.00050	0.005
<i>Trichloroethylene</i>	Not Detected	0.00050	0.005
<i>1,1,2-Trichloroethane</i>	Not Detected	0.00050	0.005
<i>Tetrachloroethylene</i>	Not Detected	0.00050	0.005
<i>Chlorobenzene</i>	Not Detected	0.00050	0.10
<i>Benzene</i>	Not Detected	0.00050	0.005
<i>Toluene</i>	Not Detected	0.00050	1.00
<i>Ethylbenzene</i>	Not Detected	0.00050	0.70
<i>Styrene</i>	Not Detected	0.00050	0.10

Synthetic Organic Contaminants

For historical data please visit the [Drinking Water Watch](#) website

Most Recent Testing Date: 07/10/2018

Location: Sweeney Finished Water

Most Recent Results:

<i>Analyte</i>	<i>Result (mg/L)</i>	<i>Reporting Limit (mg/L)</i>	<i>Regulatory Limit (mg/L)</i>
<i>Endrin</i>	Not Detected	0.00001	0.002
<i>Lindane</i>	Not Detected	0.00002	0.0002
<i>Methoxychlor</i>	Not Detected	0.0001	0.04
<i>Toxaphene</i>	Not Detected	0.001	0.003
<i>Dalapon</i>	0.001000	0.001	0.2
<i>Di(2-ethylhexyl)adipate</i>	Not Detected	0.0006	0.4
<i>Oxamyl(vydate)</i>	Not Detected	0.002	0.2
<i>Simazine</i>	Not Detected	0.00007	0.004
<i>Picloram</i>	Not Detected	0.0001	0.5
<i>Dinoseb</i>	Not Detected	0.0002	0.007
<i>Hexachlorocyclopentadiene</i>	Not Detected	0.0001	0.05
<i>Carbofuran</i>	Not Detected	0.0009	0.04
<i>Atrazine</i>	Not Detected	0.0001	0.003
<i>Alachlor</i>	Not Detected	0.0002	0.002
<i>Heptachlor</i>	Not Detected	0.00004	0.0004
<i>Heptachlor Epoxide</i>	Not Detected	0.00002	0.0002
<i>2,4-D</i>	Not Detected	0.0001	0.07
<i>2,4,5-TP (Silvex)</i>	Not Detected	0.0002	0.05
<i>Hexachlorobenzene</i>	Not Detected	0.0001	0.001
<i>Di(2-ethylhexyl)phthalate</i>	Not Detected	0.00132	0.006
<i>Benzo(a)pyrene</i>	Not Detected	0.00002	0.0002
<i>Pentachlorophenol</i>	Not Detected	0.00004	0.001
<i>PCB's (as decachlorobiphenol)</i>	Not Detected	0.0001	0.0005
<i>DBCP</i>	Not Detected	0.00002	0.0002
<i>Ethylene Dibromide (EDB)</i>	Not Detected	0.00001	0.00005
<i>Chlordane</i>	Not Detected	0.0002	0.002

Lead and Copper

For historical data please visit the [Drinking Water Watch](#) website

Most Recent Testing Date: 08/17/2017

Location: Sweeney Distribution System

Most Recent Results:

<i>Analyte</i>	90 th percentile Result (mg/L)	Reporting Level (mg/L)	Regulatory Limit (mg/L)
<i>Lead</i>	Not Detected	0.003	0.015
<i>Copper</i>	0.210	0.050	1.300

Nitrate

For historical data please visit the [Drinking Water Watch](#) website

Most Recent Testing Date: 04/11/2018

Location: Sweeney Finished Water

Most Recent Results:

<i>Analyte</i>	Result (mg/L)	Reporting Level (mg/L)	Regulatory Limit (mg/L)
<i>Nitrate</i>	Not Detected	1.00	10.00

Per-fluorinated Compounds

2018 results can be found on our [Emerging Contaminants](#) webpage

Most Recent Testing Date: 08/28/2018

Location: Total Filter Combined Prior to UV - Sweeney

Most Recent Results:

<i>Analyte</i>	Result (ug/L)	Reporting Level (ug/L)	Regulatory Limit
<i>PFECA-G</i>	Not Detected	1.22	N/A
<i>GenX</i>	8.28	0.611	N/A
<i>NEtFOSE</i>	Not Detected	1.22	N/A
<i>NMeFOSE</i>	Not Detected	1.22	N/A
<i>10:2 FTS</i>	Not Detected	1.22	N/A
<i>8:2 FTS</i>	Not Detected	1.22	N/A
<i>NEtFOSA</i>	Not Detected	1.22	N/A
<i>NEtFOSAA</i>	Not Detected	1.22	N/A
<i>NMeFOSA</i>	Not Detected	1.22	N/A
<i>NMeFOSAA</i>	Not Detected	1.22	N/A
<i>PFBS</i>	4.06	0.611	N/A
<i>PFDS</i>	Not Detected	0.611	N/A
<i>PFDA</i>	2.55	0.611	N/A
<i>PFDoA</i>	Not Detected	0.611	N/A
<i>PFHpS</i>	Not Detected	0.611	N/A
<i>PFHpA</i>	22.1	0.611	N/A
<i>PFHxS</i>	6.04	0.611	N/A
<i>PFHxA</i>	36.7	0.611	N/A
<i>PFNS</i>	Not Detected	0.611	N/A
<i>PFNA</i>	3.13	0.611	N/A

<i>PFOSA</i>	Not Detected	0.611	N/A
<i>PFOS</i>	18.4	0.611	N/A
<i>PFOA</i>	12.8	0.611	N/A
<i>PFPeS</i>	1.40	0.611	N/A
<i>PFPeA</i>	30.3	0.611	N/A
<i>PFTeDA</i>	Not Detected	0.611	N/A
<i>PFTrDA</i>	Not Detected	0.611	N/A
<i>PFUdA</i>	0.649	0.611	N/A
<i>ADONA</i>	Not Detected	1.22	N/A
<i>4:2 FTS</i>	Not Detected	0.611	N/A
<i>6:2 FTS</i>	Not Detected	0.611	N/A
<i>PFBA</i>	14.7	0.611	N/A
<i>Nafion Byproduct 1*</i>	N/A	1.22	N/A
<i>Nafion Byproduct 2*</i>	N/A	1.22	N/A
<i>PFO4DA*</i>	N/A	1.22	N/A
<i>PFMOPrA*</i>	N/A	1.22	N/A
<i>PFMOBA*</i>	N/A	1.22	N/A
<i>PFO3OA*</i>	N/A	1.22	N/A
<i>PFO2HxA*</i>	N/A	1.22	N/A
<i>PFMOAA*</i>	N/A	1.22	N/A

**There are no testing standards for these compounds therefore the concentrations must be estimated.*

Radiologicals

For historical data please visit the [Drinking Water Watch](#) website

Most Recent Testing Date: 12/10/2014

Location: Sweeney Finished Water

Most Recent Results:

<i>Analyte</i>	Result (pCi/L)	Reporting Limit (pCi/L)	Allowable Limit (pCi/L)
<i>Gross Alpha</i>	Not Detected	3	15
<i>Combined Uranium</i>	Not Detected	0.67	20.1
<i>Combined Radium</i>	Not Detected	1	5
<i>Radium-226</i>	Not Detected	1	3
<i>Radium-228</i>	Not Detected	1	2

Sweeney Pilot Test

For results on the pilot test, please view the final alternatives evaluation report by Black and Veatch.

[Black and Veatch Final Report](#)

Total Organic Carbon / Alkalinity

For historical data please visit the [Drinking Water Watch](#) website

Most Recent Testing Date: September 2018 (Average)

Location: Sweeney Finished Water

Most Recent Results:

<i>Analyte</i>	Result (mg/L)	Reporting Limit (mg/L)	Regulatory Limit (mg/L)
<i>Alkalinity</i>	15.25	1.0	N/A
<i>Total Organic Carbon</i>	2.35	1.0	N/A