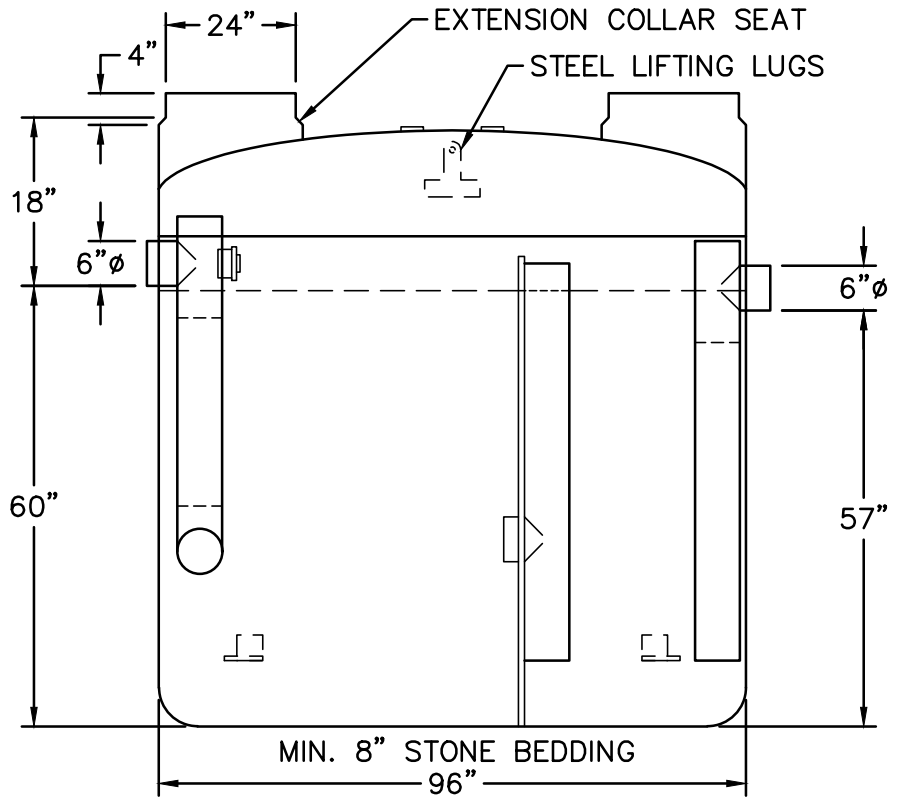


MIN. 8" STONE BEDDING

ELEVATION



MIN. 8" STONE BEDDING

SECTION A-A

NOTES:

1. FOR GRAVITY APPLICATIONS ONLY.
2. MIN. THICKNESS: 1/4" WALL AND 3/8" TOP AND BOTTOM BOWLS.
3. STANDARD PIPE STUBS ARE SOCKET SDR 35 PVC.
4. EXTENSION COLLARS SHALL BE CAULKED WITH SIKAFLEX OR EQUIVALENT FOR WATERTIGHT SEAL.
5. FOLLOW MANUFACTURE'S SPECS FOR TRAFFIC OR PEDESTRIAN LOADING.
6. MUST COMPLETE CFPUA'S APPLICATION FOR AUTHORIZATION TO CONSTRUCT. CONTACT COMMUNITY COMPLIANCE AT 910-332-6558 OR COMMUNITY.COMPLIANCE@CFPUA.ORG.
7. SHALL BE SIZED TO ACHIEVE A MINIMUM 20 MINUTE DETENTION TIME.
8. ALL FIXTURES AND DRAINS RECEIVING GREASE LADEN SOURCES FROM KITCHEN OR FOOD PREPARATION WASTE WATER SHALL PASS THROUGH THE GREASE INTERCEPTOR.

DETAIL:

FIBERGLASS GREASE INTERCEPTOR

SCALE: NOT TO SCALE

CFPUA DETAIL DATE:

CFPUA REV. No: 1

01/01/19



CAPE FEAR PUBLIC UTILITY AUTHORITY
 235 GOVERNMENT CENTER DRIVE
 WILMINGTON, NC 28403
 OFFICE: (910)332-6560

Stewardship. Sustainability. Service.

DETAIL NO:

EM-3

SHEET NO:

-